

Name: Rabbit polyclonal anti-IGLL1 antibody
Product Data Sheet - ANTIBODY**Catalog: TA314063**

Components:	• Rabbit polyclonal anti-IGLL1 antibody (TA314063)
Amount:	100ul
Immunogen:	The antiserum was produced against synthesized peptide derived from internal of human IGLL1.
Host:	Rabbit
Isotype:	IgG
Species Reactivity:	Human
Guaranteed Applications:	IHC
Suggested Dilutions:	IHC: 1:50~1:100, ELISA: 1:40000
Concentration:	1mg/ml
Buffer:	Phosphate buffered saline (without Mg ²⁺ and Ca ²⁺), pH 7.4, 150mM NaCl, 0.02% sodium azide and 50% glycerol.
Purification:	The antibody was affinity-purified from rabbit antiserum by affinity-chromatography using epitope-specific immunogen.
Storage Condition:	Shipped at -20C. Upon delivery store at -20C. Dilute in PBS (pH7.3) if necessary. Stable for 12 months from date of receipt. Avoid repeated freeze-thaws.

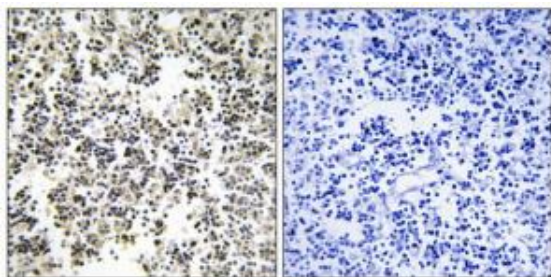
Target

Target Name:	Homo sapiens immunoglobulin lambda-like polypeptide 1 (IGLL1), transcript variant 1
Alternative Name:	14.1; AGM2; CD179b; IGL1; IGL5; IGLJ14.1; IGLL; IGO; IGVPB; VPREB2
Database Link:	NP_064455
Function:	

This product is to be used for laboratory only. Not for diagnostic or therapeutic use.

© 2014 OriGene Technologies, Inc. 9620 Medical Center Dr., Suite 200, Rockville, MD 20850

Validation Data



Immunohistochemistry analysis of paraffin-embedded human lymph node tissue using IGLL1 antibody. The picture on the right is treated with the synthesized peptide.

* More validation images may be available on our website: <http://www.origene.com/antibody/TA314063.aspx>

This product is to be used for laboratory only. Not for diagnostic or therapeutic use.

© 2014 OriGene Technologies, Inc. 9620 Medical Center Dr., Suite 200, Rockville, MD 20850
