

Name: Rabbit polyclonal IL-2Rbeta/CD122 (Tyr364) antibody(Phospho-specific)**Catalog:** TA314068**Product Data Sheet - PHOSPHO**

Components:	• Rabbit polyclonal IL-2Rbeta/CD122 (Tyr364) antibody(Phospho-specific) (TA314068)
Amount:	100ul
Immunogen:	The antiserum was produced against synthesized phosphopeptide derived from human IL-2Rβ/CD122 around the phosphorylation site of tyrosine 364 (Q-G-YP-F-F).
Host:	Rabbit
Isotype:	IgG
Species Reactivity:	Human, Mouse
Guaranteed Applications:	WB
Suggested Dilutions:	WB: 1:500~1:3000, ELISA: 1:10000
Concentration:	1mg/ml
Buffer:	Phosphate buffered saline (without Mg2+ and Ca2+), pH 7.4, 150mM NaCl, 0.02% sodium azide and 50% glycerol.
Purification:	The antibody was affinity-purified from rabbit antiserum by affinity-chromatography using epitope-specific immunogen.
Storage Condition:	Shipped at -20C. Upon delivery store at -20C. Dilute in PBS (pH7.3) if necessary. Stable for 12 months from date of receipt. Avoid repeated freeze-thaws.

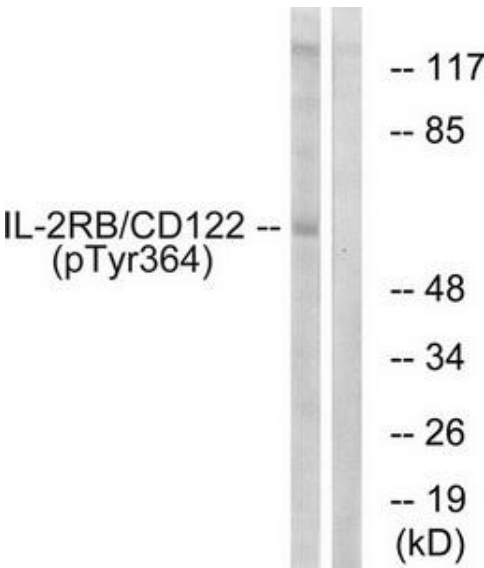
Target

Target Name:	Homo sapiens interleukin 2 receptor, beta (IL2RB)
Alternative Name:	CD122; IL15RB; P70-75
Database Link:	NP_000869
Function:	

This product is to be used for laboratory only. Not for diagnostic or therapeutic use.

© 2014 OriGene Technologies, Inc. 9620 Medical Center Dr., Suite 200, Rockville, MD 20850

Validation Data



Western blot analysis of extracts from COS7 cells, using IL-2RB/CD122 (Phospho-Tyr364) antibody. The lane on the right is treated with the synthesized peptide.

* More validation images may be available on our website: <http://www.origene.com/antibody/TA314068.aspx>