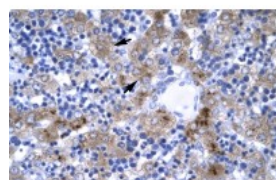


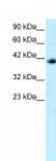


ISGF3G Antibody

CATALOG NUMBER: 27-317



Antibody used in IHC on Human Liver.



Antibody used in WB on Human HepG2 at 0.2-1 ug/ml.

Specifications

SPECIES REACTIVITY:	Human, Mouse, Rat
TESTED APPLICATIONS:	ELISA, WB
APPLICATIONS:	ISGF3G antibody can be used for detection of ISGF3G by ELISA at 1:62500. ISGF3G antibody can be used for detection of ISGF3G by western blot at 2.5 ug/mL, and HRP conjugated secondary antibody should be diluted 1:50,000 - 100,000.
USER NOTE:	Optimal dilutions for each application to be determined by the researcher.
POSITIVE CONTROL:	1) Cat. No. 1205 - Jurkat Cell Lysate
PREDICTED MOLECULAR WEIGHT:	44 kDa
IMMUNOGEN:	Antibody produced in rabbits immunized with a synthetic peptide corresponding a region of human ISGF3G.
HOST SPECIES:	Rabbit

Properties

PURIFICATION:	Antibody is purified by peptide affinity chromatography method.
PHYSICAL STATE:	Lyophilized
BUFFER:	Antibody is lyophilized in PBS buffer with 2% sucrose. Add 50 uL of distilled water. Final antibody concentration is 1 mg/mL.
CONCENTRATION:	1 mg/ml
STORAGE CONDITIONS:	For short periods of storage (days) store at 4°C. For longer periods of storage, store ISGF3G antibody at -20°C. As with any antibody avoid repeat freeze-thaw cycles.
CLONALITY:	Polyclonal
CONJUGATE:	Unconjugated

Additional Info

ALTERNATE NAMES:	ISGF3G, IRF-9, ISGF3, ISGF3G, p48
ACCESSION NO.:	NP_006075
PROTEIN GI NO.:	25282407

OFFICIAL SYMBOL:	IRF9
GENE ID:	10379

Background

BACKGROUND:	ISGF3G functions to recruit RNA polymerase II to the promoter of interferon-stimulated genes and requires histone deacetylases. Defects in ISGF3 can cause resistance to IFN-. (2a) treatment.
REFERENCES:	1) Laver, T., (2008) J. Interferon Cytokine Res. 28 (1), 13-23.

FOR RESEARCH USE ONLY

December 12, 2016