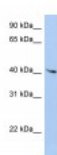




LYL1 Antibody

CATALOG NUMBER: 27-332



Antibody used in WB on Human HepG2 at
0.2-1 ug/ml.

Specifications

SPECIES REACTIVITY:	Human
TESTED APPLICATIONS:	ELISA, WB
APPLICATIONS:	LYL1 antibody can be used for detection of LYL1 by ELISA at 1:62500. LYL1 antibody can be used for detection of LYL1 by western blot at 1 ug/mL, and HRP conjugated secondary antibody should be diluted 1:50,000 - 100,000.
USER NOTE:	Optimal dilutions for each application to be determined by the researcher.
POSITIVE CONTROL:	1) Cat. No. 1211 - HepG2 Cell Lysate
PREDICTED MOLECULAR WEIGHT:	38 kDa
IMMUNOGEN:	Antibody produced in rabbits immunized with a synthetic peptide corresponding a region of human LYL1.
HOST SPECIES:	Rabbit

Properties

PURIFICATION:	Antibody is purified by peptide affinity chromatography method.
PHYSICAL STATE:	Lyophilized
BUFFER:	Antibody is lyophilized in PBS buffer with 2% sucrose. Add 50 uL of distilled water. Final antibody concentration is 1 mg/mL.
CONCENTRATION:	1 mg/ml
STORAGE CONDITIONS:	For short periods of storage (days) store at 4°C. For longer periods of storage, store LYL1 antibody at -20°C. As with any antibody avoid repeat freeze-thaw cycles.
CLONALITY:	Polyclonal
CONJUGATE:	Unconjugated

Additional Info

ALTERNATE NAMES:	LYL1, bHLHa18
ACCESSION NO.:	AAA88084
PROTEIN GI NO.:	1196440

OFFICIAL SYMBOL: LYL1

GENE ID: 4066

Background

BACKGROUND: LYL1 contains 1 basic helix-loop-helix (bHLH) domain. A chromosomal aberration, translocation t (7;19) (q35;p13) with TCRB, involving LYL1 may be a cause of a form of T-cell acute lymphoblastic leukemia (T-ALL).

FOR RESEARCH USE ONLY

December 12, 2016