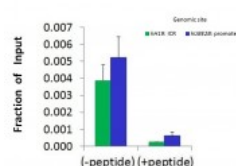




HDAC6 Antibody

CATALOG NUMBER: 27-349



Antibody used in WB on Human 293T at 0.2-1 ug/ml.

Antibody used in CHIP on HCT116 Cells.

Specifications

SPECIES REACTIVITY:	Dog, Human
TESTED APPLICATIONS:	ELISA, WB
APPLICATIONS:	HDAC6 antibody can be used for detection of HDAC6 by ELISA at 1:62500. HDAC6 antibody can be used for detection of HDAC6 by western blot at 1.0 ug/mL, and HRP conjugated secondary antibody should be diluted 1:50,000 - 100,000.
USER NOTE:	Optimal dilutions for each application to be determined by the researcher.
POSITIVE CONTROL:	1) 293T Cell Lysate
PREDICTED MOLECULAR WEIGHT:	16 kDa, 131 kDa
IMMUNOGEN:	Antibody produced in rabbits immunized with a synthetic peptide corresponding a region of human HDAC6.
HOST SPECIES:	Rabbit

Properties

PURIFICATION:	Antibody is purified by peptide affinity chromatography method.
PHYSICAL STATE:	Lyophilized
BUFFER:	Antibody is lyophilized in PBS buffer with 2% sucrose. Add 50 uL of distilled water. Final antibody concentration is 1 mg/mL.
CONCENTRATION:	1 mg/ml
STORAGE CONDITIONS:	For short periods of storage (days) store at 4°C. For longer periods of storage, store HDAC6 antibody at -20°C. As with any antibody avoid repeat freeze-thaw cycles.
CLONALITY:	Polyclonal
CONJUGATE:	Unconjugated

Additional Info

ALTERNATE NAMES:	HDAC6, HD6, JM21, CPBHM
ACCESSION NO.:	AAH05872
PROTEIN GI NO.:	13543430

OFFICIAL SYMBOL: HDAC6

GENE ID: 10013

Background

BACKGROUND: Histones play a critical role in transcriptional regulation, cell cycle progression, and developmental events. Histone acetylation/deacetylation alters chromosome structure and affects transcription factor access to DNA. The protein belongs to class II of the histone deacetylase/acuc/apha family. It contains an internal duplication of two catalytic domains which appear to function independently of each other. This protein possesses histone deacetylase activity and represses transcription.

REFERENCES: 1) Int J Mol Med. 2003 Jul;12(1):87-93..

FOR RESEARCH USE ONLY

December 12, 2016