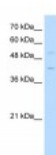




## KLF1 Antibody

CATALOG NUMBER: 27-358



Antibody used in WB on Human Jurkat  
0.2-1 ug/ml.

Specifications	
<b>SPECIES REACTIVITY:</b>	Human
<b>TESTED APPLICATIONS:</b>	ELISA, WB
<b>APPLICATIONS:</b>	KLF1 antibody can be used for detection of KLF1 by ELISA at 1:1562500. KLF1 antibody can be used for detection of KLF1 by western blot at 0.5 ug/mL, and HRP conjugated secondary antibody should be diluted 1:50,000 - 100,000.
<b>USER NOTE:</b>	Optimal dilutions for each application to be determined by the researcher.
<b>POSITIVE CONTROL:</b>	1) Cat. No. 1205 - Jurkat Cell Lysate
<b>PREDICTED MOLECULAR WEIGHT:</b>	38 kDa
<b>IMMUNOGEN:</b>	Antibody produced in rabbits immunized with a synthetic peptide corresponding a region of human KLF1.
<b>HOST SPECIES:</b>	Rabbit
Properties	
<b>PURIFICATION:</b>	Antibody is purified by peptide affinity chromatography method.
<b>PHYSICAL STATE:</b>	Lyophilized
<b>BUFFER:</b>	Antibody is lyophilized in PBS buffer with 2% sucrose. Add 50 uL of distilled water. Final antibody concentration is 1 mg/mL.
<b>CONCENTRATION:</b>	1 mg/ml
<b>STORAGE CONDITIONS:</b>	For short periods of storage (days) store at 4°C. For longer periods of storage, store KLF1 antibody at -20°C. As with any antibody avoid repeat freeze-thaw cycles.
<b>CLONALITY:</b>	Polyclonal
<b>CONJUGATE:</b>	Unconjugated
Additional Info	
<b>ALTERNATE NAMES:</b>	KLF1, EKLF, INLU, CDAN4, HBFQTL6
<b>ACCESSION NO.:</b>	NP_006554
<b>PROTEIN GI NO.:</b>	10835246

OFFICIAL SYMBOL:	KLF1
GENE ID:	10661

### Background

BACKGROUND:	KLF1 is a transcription factor, originally identified in this laboratory, which plays a crucial role as a transcriptional activator at the adult beta-globin locus.
-------------	---

REFERENCES:	1) Quadrini, K.J., (2008) Exp. Cell Res. 314 (7), 1595-1604.
-------------	--

FOR RESEARCH USE ONLY

December 12, 2016