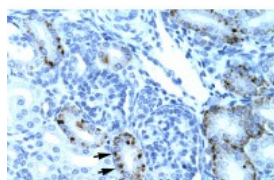


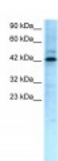


## TCFL5 Antibody

CATALOG NUMBER: 27-359



Antibody used in IHC on Human kidney lysate.



Antibody used in WB on Human HepG2 at 0.2-1 ug/ml.

### Specifications

<b>SPECIES REACTIVITY:</b>	Human
<b>TESTED APPLICATIONS:</b>	ELISA, IHC, WB
<b>APPLICATIONS:</b>	TCFL5 antibody can be used for detection of TCFL5 by ELISA at 1:312500. TCFL5 antibody can be used for detection of TCFL5 by western blot at 2.0/mL.
<b>USER NOTE:</b>	Optimal dilutions for each application to be determined by the researcher.
<b>POSITIVE CONTROL:</b>	1) Cat. No. 1211 - HepG2 Cell Lysate
<b>PREDICTED MOLECULAR WEIGHT:</b>	53 kDa
<b>IMMUNOGEN:</b>	Antibody produced in rabbits immunized with a synthetic peptide corresponding a region of human TCFL5.
<b>HOST SPECIES:</b>	Rabbit

### Properties

<b>PURIFICATION:</b>	Antibody is purified by peptide affinity chromatography method.
<b>PHYSICAL STATE:</b>	Lyophilized
<b>BUFFER:</b>	Antibody is lyophilized in PBS buffer with 2% sucrose. Add 50 uL of distilled water. Final antibody concentration is 1 mg/mL.
<b>CONCENTRATION:</b>	1 mg/ml
<b>STORAGE CONDITIONS:</b>	For short periods of storage (days) store at 4°C. For longer periods of storage, store TCFL5 antibody at -20°C. As with any antibody avoid repeat freeze-thaw cycles.
<b>CLONALITY:</b>	Polyclonal
<b>CONJUGATE:</b>	Unconjugated

### Additional Info

<b>ALTERNATE NAMES:</b>	TCFL5, CHA, Figlb, E2BP-1, bHLHe82
<b>ACCESSION NO.:</b>	NP_006593
<b>PROTEIN GI NO.:</b>	38505159
<b>OFFICIAL SYMBOL:</b>	TCFL5

GENE ID: 10732

---

### Background

**BACKGROUND:** TCFL5 is a new bHLH transcription factor that negatively regulates upstream transcription factor-dependent transcription.

**REFERENCES:** 1) Rodriguez, C.I., et al., (2003) J. Biol. Chem. 278 (44), 43135-43145.

---

**FOR RESEARCH USE ONLY**

December 12, 2016