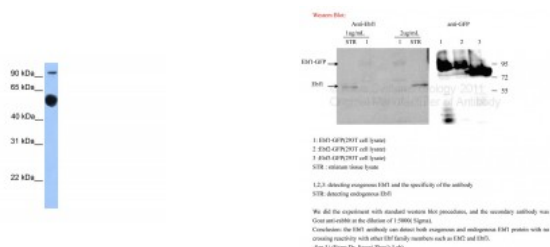




EBF1 Antibody

CATALOG NUMBER: 27-376



Antibody used in WB on Human brain at 0.2-1 $\mu\text{g/ml}$.

Antibody used in WB on Human Striatum.

Specifications

SPECIES REACTIVITY:	C. elegans, Drosophila, Human, Mouse, Rat
TESTED APPLICATIONS:	ELISA, WB
APPLICATIONS:	EBF1 antibody can be used for detection of EBF1 by ELISA at 1:312500. EBF1 antibody can be used for detection of EBF1 by western blot at 1 ug/mL, and HRP conjugated secondary antibody should be diluted 1:50,000 - 100,000.
USER NOTE:	Optimal dilutions for each application to be determined by the researcher.
POSITIVE CONTROL:	1) Cat. No. XBL-10123 - Fetal Brain Tissue Lysate
PREDICTED MOLECULAR WEIGHT:	64 kDa
IMMUNOGEN:	Antibody produced in rabbits immunized with a synthetic peptide corresponding a region of human EBF1.
HOST SPECIES:	Rabbit

Properties

PURIFICATION:	Antibody is purified by peptide affinity chromatography method.
PHYSICAL STATE:	Lyophilized
BUFFER:	Antibody is lyophilized in PBS buffer with 2% sucrose. Add 50 uL of distilled water. Final antibody concentration is 1 mg/mL.
CONCENTRATION:	1 mg/ml
STORAGE CONDITIONS:	For short periods of storage (days) store at 4°C. For longer periods of storage, store EBF1 antibody at -20°C. As with any antibody avoid repeat freeze-thaw cycles.
CLONALITY:	Polyclonal
CONJUGATE:	Unconjugated

Additional Info

ALTERNATE NAMES:	EBF1, COE1, EBF, O/E-1, OLF1
ACCESSION NO.:	NP_076870
PROTEIN GI NO.:	31415878

OFFICIAL SYMBOL: EBF1

GENE ID: 1879

Background

BACKGROUND: EBF1 belongs to the COE family. It contains 1 IPT/TIG domain. EBF1 is a transcriptional activator which recognizes variations of the palindromic sequence 5'-ATTCCCNNGGAATT-3'.

REFERENCES: 1) Roessler, S., (2007) Mol. Cell. Biol. 27 (2), 579-594.

FOR RESEARCH USE ONLY

December 12, 2016