

Name: Rabbit polyclonal Nuclear Receptor NR4A1 (Ser351)(Phospho-specific)**Catalog:** TA314016**Product Data Sheet - PHOSPHO**

Components:	• Rabbit polyclonal Nuclear Receptor NR4A1 (Ser351)(Phospho-specific) (TA314016)
Amount:	100ul
Immunogen:	The antiserum was produced against synthesized phosphopeptide derived from human Nuclear Receptor NR4A1 around the phosphorylation site of serine 351 (L-P-SP-K-P).
Host:	Rabbit
Isotype:	IgG
Species Reactivity:	Human, Mouse, Rat
Guaranteed Applications:	IHC
Suggested Dilutions:	IHC: 1:50~1:100, ELISA: 1:40000
Concentration:	1mg/ml
Buffer:	Phosphate buffered saline (without Mg ²⁺ and Ca ²⁺), pH 7.4, 150mM NaCl, 0.02% sodium azide and 50% glycerol.
Purification:	The antibody was affinity-purified from rabbit antiserum by affinity-chromatography using epitope-specific immunogen.
Storage Condition:	Shipped at -20C. Upon delivery store at -20C. Dilute in PBS (pH7.3) if necessary. Stable for 12 months from date of receipt. Avoid repeated freeze-thaws.

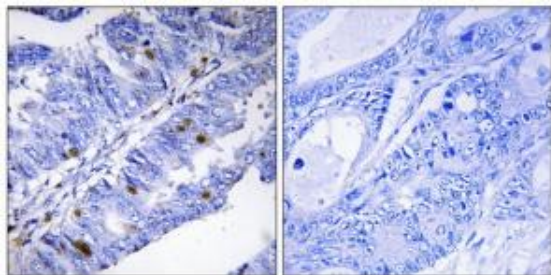
Target

Target Name:	Homo sapiens nuclear receptor subfamily 4, group A, member 1 (NR4A1), transcript variant 3
Alternative Name:	HMR, N10, TR3, NP10, GFRP1, NAK-1, NGFIB, NUR77, MGC9485;GFRP1; Gfrp; Hbr-1; Hbr1; Hmr; N10; NGFI-B; NGFIB; NP10; TIS1; TR3; nur77; hormone receptor; nuclear receptor subfamily 4, group A, member 1
Database Link:	NP_775181
Function:	

This product is to be used for laboratory only. Not for diagnostic or therapeutic use.

© 2014 OriGene Technologies, Inc. 9620 Medical Center Dr., Suite 200, Rockville, MD 20850

Validation Data



Immunohistochemistry analysis of paraffin-embedded human colon carcinoma tissue using Nuclear Receptor NR4A1 (Phospho-Ser351) antibody. The picture on the right is treated with the synthesized peptide.

* More validation images may be available on our website: <http://www.origene.com/antibody/TA314016.aspx>

This product is to be used for laboratory only. Not for diagnostic or therapeutic use.

© 2014 OriGene Technologies, Inc. 9620 Medical Center Dr., Suite 200, Rockville, MD 20850
