

Name: Rabbit polyclonal Nuclear Receptor NR4A1 (Ab-351) antibody
Product Data Sheet - ANTIBODY**Catalog: TA314017**

Components:	<ul style="list-style-type: none">• Rabbit polyclonal Nuclear Receptor NR4A1 (Ab-351) antibody (TA314017)• 1 vial of 20ug myc-DDK tagged NR4A1 HEK293T over-expression lysate lyophilized in RIPA buffer (LC419513). (Reconstitute into 20ul of 1x SDS sample buffer before loading; load 5ul per lane as WB control or as desired)
Amount:	100ul
Immunogen:	The antiserum was produced against synthesized non-phosphopeptide derived from human Nuclear Receptor NR4A1 around the phosphorylation site of serine 351 (L-P-SP-K-P).
Host:	Rabbit
Isotype:	IgG
Species Reactivity:	Human, Mouse, Rat
Guaranteed Applications:	WB, IHC
Suggested Dilutions:	WB: 1:500~1:3000, IHC: 1:50~1:100, ELISA: 1:10000
Concentration:	1mg/ml
Buffer:	Phosphate buffered saline (without Mg ²⁺ and Ca ²⁺), pH 7.4, 150mM NaCl, 0.02% sodium azide and 50% glycerol.
Purification:	The antibody was affinity-purified from rabbit antiserum by affinity-chromatography using epitope-specific immunogen.
Storage Condition:	Shipped at -20C. Upon delivery store at -20C. Dilute in PBS (pH7.3) if necessary. Stable for 12 months from date of receipt. Avoid repeated freeze-thaws.

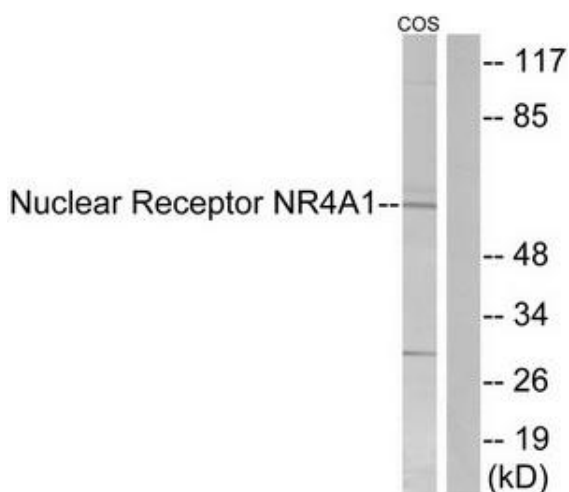
Target

Target Name:	Homo sapiens nuclear receptor subfamily 4, group A, member 1 (NR4A1), transcript variant 3
Alternative Name:	GFRP1; HMR; N10; NAK-1; NGFIB; NP10; NUR77; TR3
Database Link:	NP_001189162
Function:	

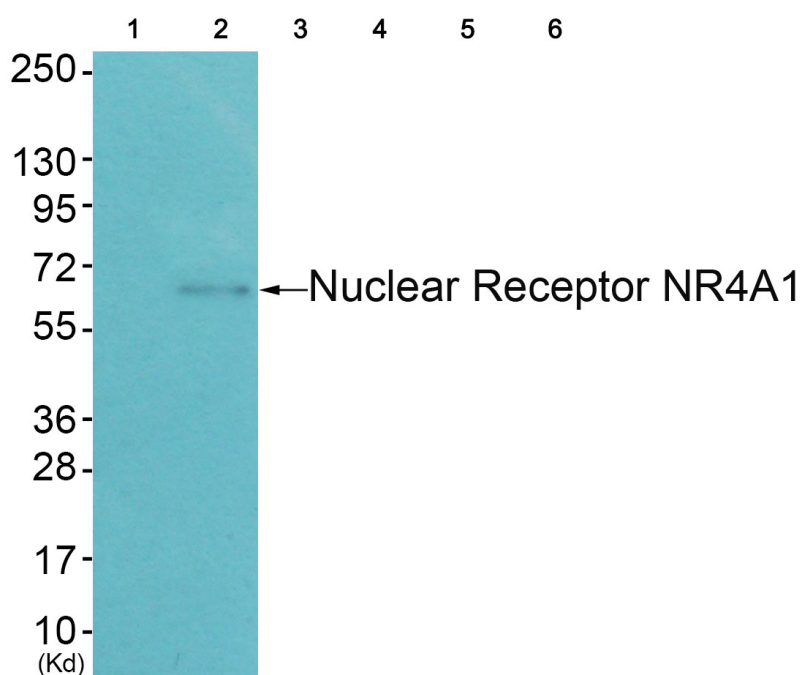
This product is to be used for laboratory only. Not for diagnostic or therapeutic use.

© 2014 OriGene Technologies, Inc. 9620 Medical Center Dr., Suite 200, Rockville, MD 20850

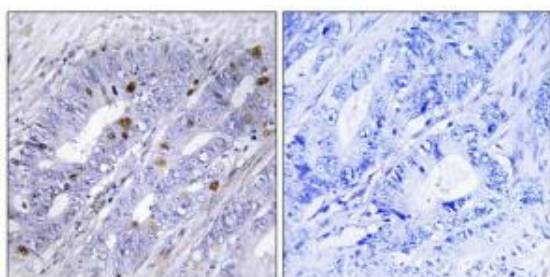
Validation Data



Western blot analysis of extracts from COS-7 cells, using Nuclear Receptor NR4A1 (Ab-351) antibody. The lane on the right is treated with the synthesized peptide.



Western blot analysis of extracts from HepG2 cells (Lane 2), using Nuclear Receptor NR4A1 (Ab-351) Antibody. The lane on the left is treated with synthesized peptide.



Immunohistochemistry analysis of paraffin-embedded human colon carcinoma tissue using Nuclear Receptor NR4A1 (Ab-351) antibody. The picture on the right is treated with the synthesized peptide.

* More validation images may be available on our website: <http://www.origene.com/antibody/TA314017.aspx>

This product is to be used for laboratory only. Not for diagnostic or therapeutic use.

© 2014 OriGene Technologies, Inc. 9620 Medical Center Dr., Suite 200, Rockville, MD 20850