

Name: Rabbit polyclonal IGF2R (Ser2409) antibody(Phospho-specific)**Catalog:** TA314055**Product Data Sheet - PHOSPHO**

| | |
|---------------------------------|---|
| Components: | • Rabbit polyclonal IGF2R (Ser2409) antibody(Phospho-specific) (TA314055) |
| Amount: | 100ul |
| Immunogen: | The antiserum was produced against synthesized phosphopeptide derived from human IGF2R around the phosphorylation site of serine 2409 (Q-D-SP-E-D). |
| Host: | Rabbit |
| Isotype: | IgG |
| Species Reactivity: | Human, Mouse |
| Guaranteed Applications: | WB, IHC |
| Suggested Dilutions: | WB: 1:500~1:3000, IHC: 1:50~1:100, ELISA: 1:10000 |
| Concentration: | 1mg/ml |
| Buffer: | Phosphate buffered saline (without Mg ²⁺ and Ca ²⁺), pH 7.4, 150mM NaCl, 0.02% sodium azide and 50% glycerol. |
| Purification: | The antibody was affinity-purified from rabbit antiserum by affinity-chromatography using epitope-specific immunogen. |
| Storage Condition: | Shipped at -20C. Upon delivery store at -20C. Dilute in PBS (pH7.3) if necessary. Stable for 12 months from date of receipt. Avoid repeated freeze-thaws. |

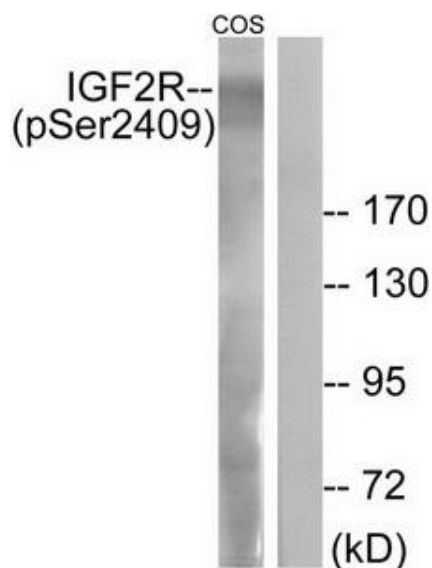
Target

| | |
|--------------------------|--|
| Target Name: | Homo sapiens insulin-like growth factor 2 receptor (IGF2R) |
| Alternative Name: | CD222; CIMPR; M6P-R; MPR1; MPRI |
| Database Link: | NP_000867 |
| Function: | |

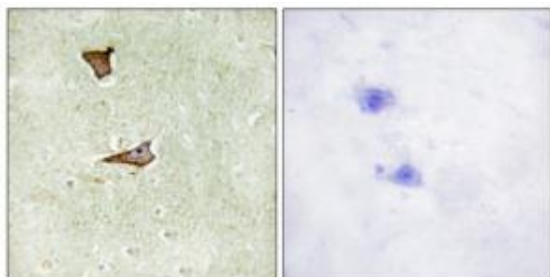
This product is to be used for laboratory only. Not for diagnostic or therapeutic use.

© 2014 OriGene Technologies, Inc. 9620 Medical Center Dr., Suite 200, Rockville, MD 20850

Validation Data



Western blot analysis of extracts from COS-7 cells, treated with UV (15mins), using IGF2R (Phospho-Ser2409) antibody. The lane on the right is treated with the synthesized peptide.



Immunohistochemistry analysis of paraffin-embedded human brain tissue using IGF2R (Phospho-Ser2409) antibody. The picture on the right is treated with the synthesized peptide.

* More validation images may be available on our website: <http://www.origene.com/antibody/TA314055.aspx>

This product is to be used for laboratory only. Not for diagnostic or therapeutic use.

© 2014 OriGene Technologies, Inc. 9620 Medical Center Dr., Suite 200, Rockville, MD 20850
