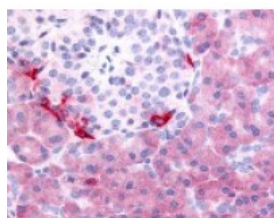




## PDE7B Antibody

CATALOG NUMBER: 48-314



Immunohistochemistry staining of PDE7B  
in pancreas tissue using PDE7B Antibody.

### Specifications

<b>SPECIES REACTIVITY:</b>	Gibbon, Gorilla, Human
<b>TESTED APPLICATIONS:</b>	IHC
<b>APPLICATIONS:</b>	PDE7B antibody can be used in ELISA, Western Blot, and immunohistochemistry starting at 5 ug/mL.
<b>USER NOTE:</b>	Optimal dilutions for each application to be determined by the researcher.
<b>SPECIFICITY:</b>	BLAST analysis of the peptide immunogen showed no homology with other human proteins.
<b>IMMUNOGEN:</b>	PDE7B antibody was raised against a peptide located near the C-Terminal region of PDE7B (Human).
<b>HOST SPECIES:</b>	Rabbit

### Properties

<b>PURIFICATION:</b>	Immunoaffinity Chromatography
<b>PHYSICAL STATE:</b>	Liquid
<b>BUFFER:</b>	PBS, 0.1% sodium azide.
<b>STORAGE CONDITIONS:</b>	PDE7B antibody should be stored long term (months) at -80 °C and short term (days) at 4 °C. As with all antibodies avoid freeze/thaw cycles.
<b>CLONALITY:</b>	Polyclonal
<b>CONJUGATE:</b>	Unconjugated

### Additional Info

<b>ALTERNATE NAMES:</b>	PDE7B, BA472E5.1, Phosphodiesterase 7B
<b>ACCESSION NO.:</b>	Q9NP56
<b>PROTEIN GI NO.:</b>	13626185
<b>OFFICIAL SYMBOL:</b>	PDE7B
<b>GENE ID:</b>	27115

### Background

<b>BACKGROUND:</b>	Phosphodiesterase 7B, a cAMP-specific phosphodiesterase, has been shown to affect cAMP-mediated neural activity and cAMP metabolism in the brain. PDE7B activity is inhibited by dipyridamole, IBMX, and SCH51866.
--------------------	--

At least three splice variants have been isolated for PDE7B from rats and they show tissue specific expression patterns.

---

**FOR RESEARCH USE ONLY**

December 13, 2016