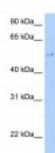




## TERF2 Antibody

CATALOG NUMBER: 27-304



Antibody used in WB on Transfected 293T  
at 5.0 ug/ml.

### Specifications

<b>SPECIES REACTIVITY:</b>	Human
<b>TESTED APPLICATIONS:</b>	ELISA, WB
<b>APPLICATIONS:</b>	TERF2 antibody can be used for detection of TERF2 by ELISA at 1:62500. TERF2 antibody can be used for detection of TERF2 by western blot at 5.0 ug/mL, and HRP conjugated secondary antibody should be diluted 1:50,000 - 100,000.
<b>USER NOTE:</b>	Optimal dilutions for each application to be determined by the researcher.
<b>POSITIVE CONTROL:</b>	1) Transfected 293T Cell Lysate
<b>PREDICTED MOLECULAR WEIGHT:</b>	55 kDa
<b>IMMUNOGEN:</b>	Antibody produced in rabbits immunized with a synthetic peptide corresponding a region of human TERF2.
<b>HOST SPECIES:</b>	Rabbit

### Properties

<b>PURIFICATION:</b>	Antibody is purified by protein A chromatography method.
<b>PHYSICAL STATE:</b>	Lyophilized
<b>BUFFER:</b>	Antibody is lyophilized in PBS buffer with 2% sucrose. Add 100 uL of distilled water. Final antibody concentration is 1 mg/mL.
<b>CONCENTRATION:</b>	1 mg/ml
<b>STORAGE CONDITIONS:</b>	For short periods of storage (days) store at 4°C. For longer periods of storage, store TERF2 antibody at -20°C. As with any antibody avoid repeat freeze-thaw cycles.
<b>CLONALITY:</b>	Polyclonal
<b>CONJUGATE:</b>	Unconjugated

### Additional Info

<b>ALTERNATE NAMES:</b>	TERF2, TRBF2, TRF2
<b>ACCESSION NO.:</b>	NP_005643
<b>PROTEIN GI NO.:</b>	429535832

**OFFICIAL SYMBOL:** TERF2

**GENE ID:** 7014

### Background

**BACKGROUND:** TERF2 is a telomere specific protein, TERF2, which is a component of the telomere nucleoprotein complex. This protein is present at telomeres in metaphase of the cell cycle, is a second negative regulator of telomere length and plays a key role in the protective activity of telomeres. While having similar telomere binding activity and domain organization, TERF2 differs from TERF1 in that its N terminus is basic rather than acidic. This gene encodes a telomere specific protein, TERF2, which is a component of the telomere nucleoprotein complex. This protein is present at telomeres in metaphase of the cell cycle, is a second negative regulator of telomere length and plays a key role in the protective activity of telomeres. While having similar telomere binding activity and domain organization, TERF2 differs from TERF1 in that its N terminus is basic rather than acidic. Publication Note: This RefSeq record includes a subset of the publications that are available for this gene. Please see the Entrez Gene record to access additional publications.

**REFERENCES:** 1) Etheridge, K.T., (2008) J. Biol. Chem. 283 (11), 6935-6941.

**FOR RESEARCH USE ONLY**

December 12, 2016