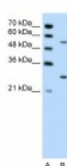




## PDPK1 Antibody

CATALOG NUMBER: 27-307



Antibody used in WB on Human Jurkat  
0.2-1 ug/ml.

### Specifications

<b>SPECIES REACTIVITY:</b>	Human
<b>TESTED APPLICATIONS:</b>	ELISA, WB
<b>APPLICATIONS:</b>	PDPK1 antibody can be used for detection of PDPK1 by ELISA at 1:312500. PDPK1 antibody can be used for detection of PDPK1 by western blot at 0.5 ug/mL, and HRP conjugated secondary antibody should be diluted 1:50,000 - 100,000.
<b>USER NOTE:</b>	Optimal dilutions for each application to be determined by the researcher.
<b>POSITIVE CONTROL:</b>	1) Cat. No. 1205 - Jurkat Cell Lysate
<b>PREDICTED MOLECULAR WEIGHT:</b>	63 kDa
<b>IMMUNOGEN:</b>	Antibody produced in rabbits immunized with a synthetic peptide corresponding a region of human PDPK1.
<b>HOST SPECIES:</b>	Rabbit

### Properties

<b>PURIFICATION:</b>	Antibody is purified by peptide affinity chromatography method.
<b>PHYSICAL STATE:</b>	Lyophilized
<b>BUFFER:</b>	Antibody is lyophilized in PBS buffer with 2% sucrose. Add 50 uL of distilled water. Final antibody concentration is 1 mg/mL.
<b>CONCENTRATION:</b>	1 mg/ml
<b>STORAGE CONDITIONS:</b>	For short periods of storage (days) store at 4°C. For longer periods of storage, store PDPK1 antibody at -20°C. As with any antibody avoid repeat freeze-thaw cycles.
<b>CLONALITY:</b>	Polyclonal
<b>CONJUGATE:</b>	Unconjugated

### Additional Info

<b>ALTERNATE NAMES:</b>	PDPK1, MGC20087, MGC35290, PDK1, PRO0461, PkB-like, PkB-like 1, PDPK2
<b>ACCESSION NO.:</b>	NP_002604
<b>PROTEIN GI NO.:</b>	4505695

**OFFICIAL SYMBOL:** PDPK1

**GENE ID:** 5170

### Background

**BACKGROUND:** PDPK1 phosphorylates and activates not only PKB/AKT, but also PKA, PKC-zeta, RPS6KA1 and RPS6KB1. It may play a general role in signaling processes and in development.

**REFERENCES:** 1) Lin, H.J., (2005) Br. J. Cancer 93 (12), 1372-1381.

**FOR RESEARCH USE ONLY**

December 12, 2016