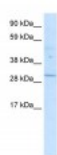
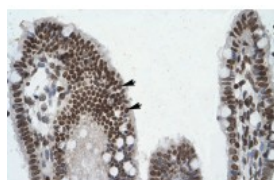




POU6F1 Antibody

CATALOG NUMBER: 27-341



Antibody used in IHC on Human Intestine.

Antibody used in WB on Human kidney nuclear extract at 0.12 ug/ml.

Specifications

SPECIES REACTIVITY:	Dog, Human, Mouse, Rat
TESTED APPLICATIONS:	ELISA, IHC, WB
APPLICATIONS:	POU6F1 antibody can be used for detection of POU6F1 by ELISA at 1:312500. POU6F1 antibody can be used for detection of POU6F1 by western blot at 0.12 ug/mL, and HRP conjugated secondary antibody should be diluted 1:50,000 - 100,000.
USER NOTE:	Optimal dilutions for each application to be determined by the researcher.
POSITIVE CONTROL:	1) Cat. No. XBL-10659 - Fetal Kidney Nuclear Tissue Lysate
PREDICTED MOLECULAR WEIGHT:	33 kDa
IMMUNOGEN:	Antibody produced in rabbits immunized with a synthetic peptide corresponding a region of human POU6F1.
HOST SPECIES:	Rabbit

Properties

PURIFICATION:	Antibody is purified by peptide affinity chromatography method.
PHYSICAL STATE:	Lyophilized
BUFFER:	Antibody is lyophilized in PBS buffer with 2% sucrose. Add 50 uL of distilled water. Final antibody concentration is 1 mg/mL.
CONCENTRATION:	1 mg/ml
STORAGE CONDITIONS:	For short periods of storage (days) store at 4°C. For longer periods of storage, store POU6F1 antibody at -20°C. As with any antibody avoid repeat freeze-thaw cycles.
CLONALITY:	Polyclonal
CONJUGATE:	Unconjugated

Additional Info

ALTERNATE NAMES:	POU6F1, BRN5, MPOU, TCFB1
ACCESSION NO.:	NP_002693
PROTEIN GI NO.:	223890225

OFFICIAL SYMBOL: POU6F1

GENE ID: 5463

Background

BACKGROUND: The POU6F1 gene encodes a protein that is part of a family of transcription factors which exhibit distinct temporal and spatial patterns of expression.

REFERENCES: 1) Wey, E., et al., (1994) J. Biochem. 220 (3), 753-762.

FOR RESEARCH USE ONLY

December 12, 2016