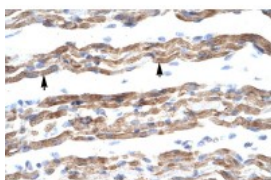




PQBP1 Antibody

CATALOG NUMBER: 27-351



Antibody used in WB on Human Lung at 2.5 ug/ml.

Antibody used in IHC on Human Muscle.

Specifications

SPECIES REACTIVITY:	Human
TESTED APPLICATIONS:	ELISA, IHC, WB
APPLICATIONS:	PQBP1 antibody can be used for detection of PQBP1 by ELISA at 1:312500. PQBP1 antibody can be used for detection of PQBP1 by western blot at 2.5 ug/mL, and HRP conjugated secondary antibody should be diluted 1:50,000 - 100,000.
USER NOTE:	Optimal dilutions for each application to be determined by the researcher.
POSITIVE CONTROL:	1) Cat. No. XBL-10410 - Fetal Lung Tissue Lysate
PREDICTED MOLECULAR WEIGHT:	30 kDa
IMMUNOGEN:	Antibody produced in rabbits immunized with a synthetic peptide corresponding a region of human PQBP1.
HOST SPECIES:	Rabbit

Properties

PURIFICATION:	Antibody is purified by protein A chromatography method.
PHYSICAL STATE:	Lyophilized
BUFFER:	Antibody is lyophilized in PBS buffer with 2% sucrose. Add 100 uL of distilled water. Final antibody concentration is 1 mg/mL.
CONCENTRATION:	1 mg/ml
STORAGE CONDITIONS:	For short periods of storage (days) store at 4°C. For longer periods of storage, store PQBP1 antibody at -20°C. As with any antibody avoid repeat freeze-thaw cycles.
CLONALITY:	Polyclonal
CONJUGATE:	Unconjugated

Additional Info

ALTERNATE NAMES:	PQBP1, SHS, MRX2, MRX55, MRXS3, MRXS8, NPW38, RENS1
ACCESSION NO.:	NP_001161462.1
PROTEIN GI NO.:	269784733

OFFICIAL SYMBOL: PQBP1

GENE ID: 10084

Background

BACKGROUND: PQBP1 is a nuclear polyglutamine-binding protein that contains a WW domain. Mutations in this gene are associated with X-linked mental retardation.

REFERENCES: 1) Waragai, M. et al., (1999) Hum Mol Genet. 8(6):977-87.

FOR RESEARCH USE ONLY

December 12, 2016