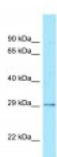




CDX2 Antibody

CATALOG NUMBER: 27-354



Antibody used in WB on Human Brain lysate at 0.2-1 ug/ml.

Specifications

SPECIES REACTIVITY:	Dog, Human, Mouse, Rat
TESTED APPLICATIONS:	ELISA, WB
APPLICATIONS:	CDX2 antibody can be used for detection of CDX2 by ELISA at 1:312500. CDX2 antibody can be used for detection of CDX2 by western blot at 0.5 ug/mL, and HRP conjugated secondary antibody should be diluted 1:50,000 - 100,000.
USER NOTE:	Optimal dilutions for each application to be determined by the researcher.
POSITIVE CONTROL:	1) Cat. No. XBL-10409 - Fetal Liver Tissue Lysate
PREDICTED MOLECULAR WEIGHT:	34 kDa
IMMUNOGEN:	Antibody produced in rabbits immunized with a synthetic peptide corresponding a region of human CDX2.
HOST SPECIES:	Rabbit

Properties

PURIFICATION:	Antibody is purified by peptide affinity chromatography method.
PHYSICAL STATE:	Lyophilized
BUFFER:	Antibody is lyophilized in PBS buffer with 2% sucrose. Add 50 uL of distilled water. Final antibody concentration is 1 mg/mL.
CONCENTRATION:	1 mg/ml
STORAGE CONDITIONS:	For short periods of storage (days) store at 4°C. For longer periods of storage, store CDX2 antibody at -20°C. As with any antibody avoid repeat freeze-thaw cycles.
CLONALITY:	Polyclonal
CONJUGATE:	Unconjugated

Additional Info

ALTERNATE NAMES:	CDX2, CDX3, CDX-3
ACCESSION NO.:	NP_001256
PROTEIN GI NO.:	372624392

OFFICIAL SYMBOL: CDX2

GENE ID: 1045

Background

BACKGROUND: CDX2 encodes a protein that plays an important role in gallbladder carcinogenesis with intestinal differentiation. Cdx2 is a highly sensitive marker for Barrett's esophagus.

REFERENCES: 1) Saad, R.S., et al., (2004) J. Clin. Pathol. 122 (3), 421-427.

FOR RESEARCH USE ONLY

December 12, 2016