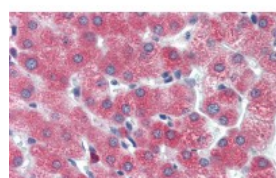


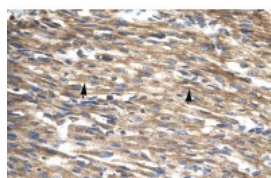


DBP Antibody

CATALOG NUMBER: 27-371



Antibody used in IHC on Human Liver cell lysates at 5.0 ug/ml.



Antibody used in IHC on Human Heart lysate.



Antibody used in WB on Human HepG2 at 0.2-1 ug/ml.

Specifications

SPECIES REACTIVITY:	Dog, Human, Mouse, Rat
TESTED APPLICATIONS:	ELISA, IHC, WB
APPLICATIONS:	DBP antibody can be used for detection of DBP by ELISA at 1:1562500. DBP antibody can be used for detection of DBP by western blot at 1.0 ug/mL, and HRP conjugated secondary antibody should be diluted 1:50,000 - 100,000.
USER NOTE:	Optimal dilutions for each application to be determined by the researcher.
POSITIVE CONTROL:	1) Cat. No. 1211 - HepG2 Cell Lysate
PREDICTED MOLECULAR WEIGHT:	34 kDa
IMMUNOGEN:	Antibody produced in rabbits immunized with a synthetic peptide corresponding a region of human DBP.
HOST SPECIES:	Rabbit

Properties

PURIFICATION:	Antibody is purified by peptide affinity chromatography method.
PHYSICAL STATE:	Lyophilized
BUFFER:	Antibody is lyophilized in PBS buffer with 2% sucrose. Add 50 uL of distilled water. Final antibody concentration is 1 mg/mL.
CONCENTRATION:	1 mg/ml
STORAGE CONDITIONS:	For short periods of storage (days) store at 4°C. For longer periods of storage, store DBP antibody at -20°C. As with any antibody avoid repeat freeze-thaw cycles.
CLONALITY:	Polyclonal
CONJUGATE:	Unconjugated

Additional Info

ALTERNATE NAMES:	DBP, DABP
ACCESSION NO.:	NP_001343
PROTEIN GI NO.:	31542493

OFFICIAL SYMBOL: DBP

GENE ID: 1628

Background

BACKGROUND: DBP is a member of the PAR bZIP (proline and acidic amino acid-rich basic leucine zipper) transcription factor family (Khatib et al., 1994).

REFERENCES: 1) Smith, J.S., et al., (2000) Genomics 64 (1), 44-50.

FOR RESEARCH USE ONLY

December 12, 2016