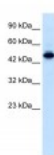


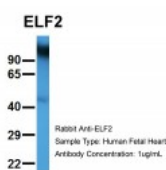


ELF2 Antibody

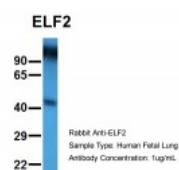
CATALOG NUMBER: 27-380



Antibody used in WB on Human Jurkat
0.2-1 ug/ml.



Antibody used in WB on Hum. Fetal Heart
at 1 ug/ml.



Antibody used in WB on Hum. Fetal Lung
at 1 ug/ml.

Specifications

SPECIES REACTIVITY:	Dog, Human, Mouse, Rat
TESTED APPLICATIONS:	ELISA, WB
APPLICATIONS:	ELF2 antibody can be used for detection of ELF2 by ELISA at 1:12500. ELF2 antibody can be used for detection of ELF2 by western blot at 0.5 ug/mL, and HRP conjugated secondary antibody should be diluted 1:50,000 - 100,000.
USER NOTE:	Optimal dilutions for each application to be determined by the researcher.
POSITIVE CONTROL:	1) Cat. No. 1205 - Jurkat Cell Lysate
PREDICTED MOLECULAR WEIGHT:	57 kDa
IMMUNOGEN:	Antibody produced in rabbits immunized with a synthetic peptide corresponding a region of human ELF2.
HOST SPECIES:	Rabbit

Properties

PURIFICATION:	Antibody is purified by peptide affinity chromatography method.
PHYSICAL STATE:	Lyophilized
BUFFER:	Antibody is lyophilized in PBS buffer with 2% sucrose. Add 50 uL of distilled water. Final antibody concentration is 1 mg/mL.
CONCENTRATION:	1 mg/ml
STORAGE CONDITIONS:	For short periods of storage (days) store at 4°C. For longer periods of storage, store ELF2 antibody at -20°C. As with any antibody avoid repeat freeze-thaw cycles.
CLONALITY:	Polyclonal
CONJUGATE:	Unconjugated

Additional Info

ALTERNATE NAMES:	ELF2, EU32, NERF, NERF-2, NERF-1A, NERF-1B, NERF-1a,b
ACCESSION NO.:	NP_006865
PROTEIN GI NO.:	6857816

OFFICIAL SYMBOL: ELF2

GENE ID: 1998

Background

BACKGROUND: The ELF2 gene encodes a protein that physically interacts with AML1 and mediates opposing effects on AML1-mediated transcription of the B cell-specific blk gene.

REFERENCES: 1) Cho, J.Y., et al., (2004) J. Biol. Chem. 279 (19), 19512-19522.

FOR RESEARCH USE ONLY

December 12, 2016